



VIEWPOINT

EXTENDED PROFILE



OVERVIEW

Viewpoint, now a subsidiary of Trimble, offers a construction management software suite that helps make projects more efficient and collaborative. Their tools are designed for everyone in the construction industry, from general contractors to housebuilders and developers.

KEY PRODUCTS AND FEATURES

- **Viewpoint for Projects:** A cloud-based document and information management system that centralizes project data, ensuring all team members access the most current information. It facilitates seamless collaboration and maintains a single source of truth for project documents.
- **Viewpoint Field View:** A mobile app that digitizes field processes, reducing reliance on paper-based systems. It enables on-site teams to capture data, manage tasks, and monitor real-time quality and safety inspections.
- **Trimble Connect:** A collaboration platform that integrates with Viewpoint solutions, allowing project stakeholders to share and access project information, including 3D models, enhancing Building Information Modelling (BIM) capabilities.

USE CASES

Viewpoint offers tailored solutions to meet the specific needs of various sectors within the construction industry, including:

- **General contractors:** Viewpoint provides tools that offer real-time insights into project parameters, helping general contractors reduce risks and increase profitability. Features include project management dashboards, document control, and BIM Level 2 compliance tools.
- **Housebuilders and developers:** The software addresses the unique challenges of fast-paced projects with multiple teams and budgets. It streamlines project management, enhances communication, and ensures compliance with regulations such as Part L.
- **Manufacturers:** Viewpoint's manufacturing management software supports the entire process from design to delivery. It provides management and sales teams with timely information, aids operations

and productivity management, and connects all team members to track orders throughout their lifecycle.

- **Modular construction firms:** For companies specializing in modular construction, Viewpoint offers solutions that manage projects from initial manufacturing to on-site installation. It connects teams and streamlines workflows with real-time data.
- **Infrastructure professionals:** Viewpoint's software simplifies large projects like road building and harbor upgrades. It enables teamwork across locations, secure cloud access, and efficient field management.

SOFTWARE SPECIFICATION

OVERVIEW	
PRODUCT NAME	Viewpoint
BUSINESS SECTORS	
DISTRIBUTION	✗
GOVERNMENT & NPO	✗
MANUFACTURING	✓
RETAIL	✗
SERVICES	✗
INDUSTRY	
AEROSPACE & DEFENSE	✗
AUTOMOTIVE	✗
CHEMICAL	✗
CONSTRUCTION	✓
COSMETICS	✗
ELECTRONICS	✗
ENERGY/POWER/UTILITIES	✗
	✓

ENGINEERING	
FASHION	×
FINANCIAL SERVICES	×
FOOD & BEVERAGE	×
LOCAL GOVERNMENT	×
MEDIA	×
MEDICAL & HEALTHCARE	×
METALWORKING	×
OILFIELD	×
PACKAGING	×
PAINT & ADHESIVES	×
PHARMACEUTICAL	×
PLASTICS & RUBBER	×
PRINT & DESIGN	×
RENTAL	×
TELECOMMUNICATIONS	×
WOODWORKING	×
CANNABIS	×
EDUCATION	×
NONPROFIT	×

ERP SOFTWARE FEATURES	
BILLING	✓
BUSINESS INTELLIGENCE/ANALYTICS	✓
COSTING	✓
CRM	✓
CUSTOMER SERVICE	✓
PRODUCT DESIGN	✓
FINANCIALS & ACCOUNTING	✓
HR	✓
INVENTORY MANAGEMENT	✓
ORDER MANAGEMENT	✓
PLANNING & SCHEDULING	✓
PROJECT MANAGEMENT	✓
PURCHASING	✓
QUALITY CONTROL	✓
SALES	✓
SHIPPING & DISTRIBUTION	✓
SUPPLY CHAIN MANAGEMENT	✓
WAREHOUSE MANAGEMENT	✓
ASSET MANAGEMENT	✓
	✓

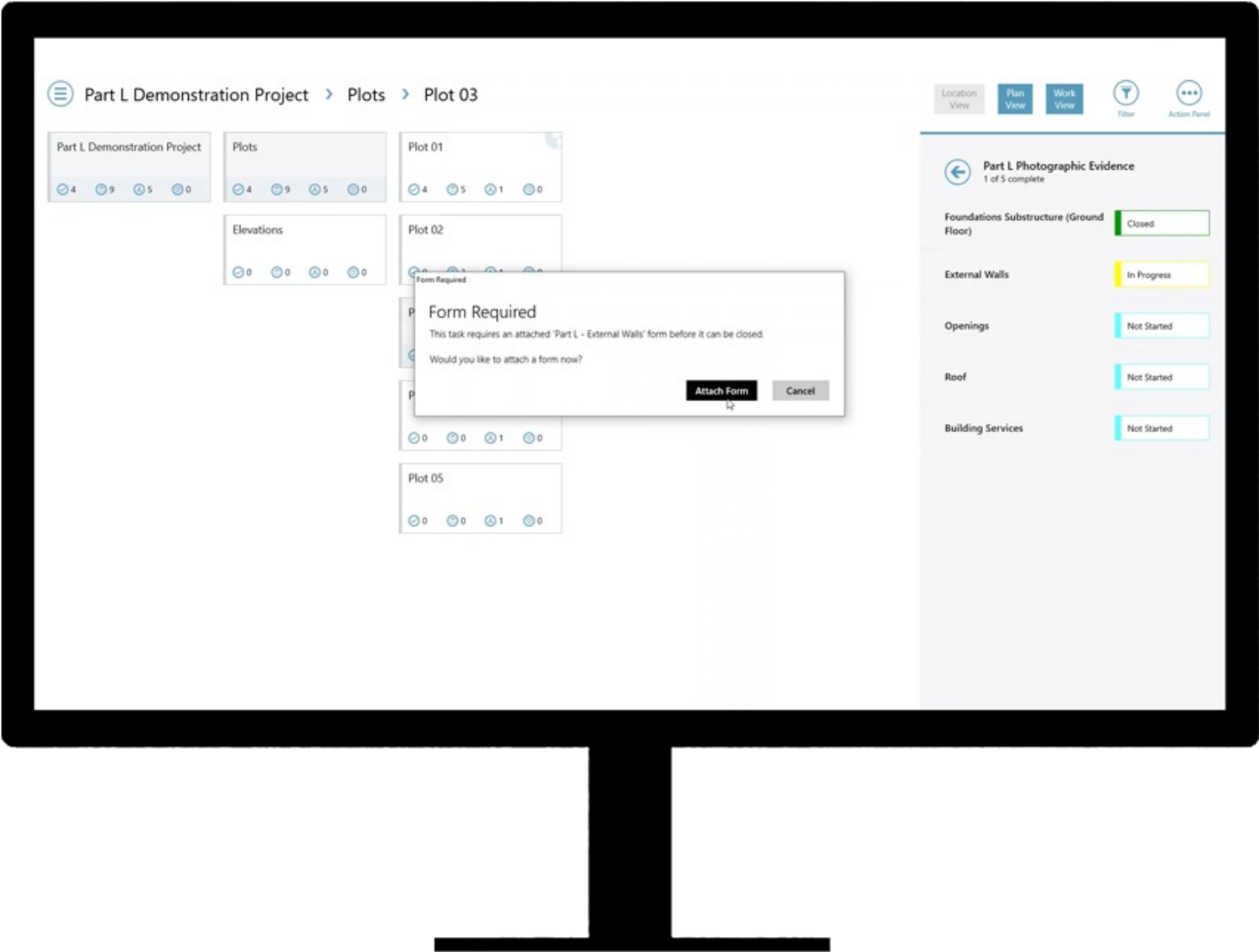
DOCUMENT MANAGEMENT	
CUSTOMER SUITABILITY	
ENTERPRISE (1000+ EMPLOYEES)	✓
MEDIUM SIZE (251-1000 EMPLOYEES)	✓
SMALL BUSINESS (1-250 EMPLOYEES)	✓
ADDITIONAL PRODUCT INFO	
MULTI LANGUAGE	✗
MULTI CURRENCY	✗
CUSTOMIZABLE	✓
SYSTEM HOSTING	
CLOUD	✓
INSTALLED ON PREMISE	✓
SUPPORT LOCATIONS	
AFRICA	✗
ANTARCTICA	✗
ASIA	✗
AUSTRALIA	✓
EUROPE	✓
NORTH AMERICA	✓
SOUTH AMERICA	✗

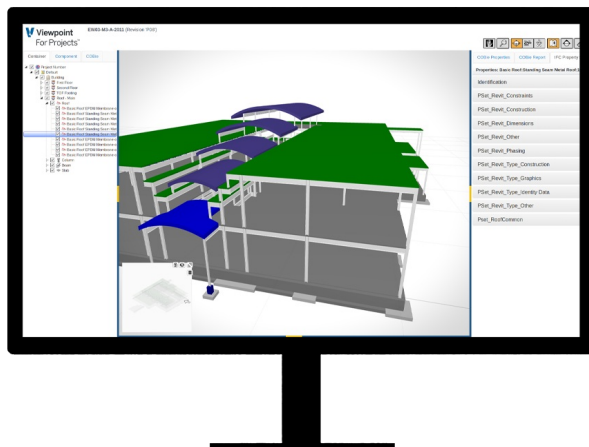
FURTHER INFORMATION

PRICING

Field View starts from \$630/month, ViewPoint for Projects starts from \$901/month

SOFTWARE SCREENSHOTS





VIEW					
FIELD VIEW	TABKS	FORMS	PROCEDURES	ASSETS	HY CLASIC
<div> <div>SUMMARY</div> <div>LIST</div> </div>					
<div> <div> <div>▼</div> <div>↑</div> </div> <div> <div>ACTIVE</div> <div>INACTIVE</div> </div> </div>					
QA RESIDENTIAL APARTMENTS INTERNAL PROCESS					
LOCATION	01. INTERNAL & RISKY WALLS	02. 1ST FIK VENTILATION	03. 1ST FIK MECHANICAL	04. 1ST FIK ELECTRICAL	05. 1ST FIK CARPENTRY
GA-01 > Apartments > GA Core > 1st Floor > Internals > Apartments Project	<div></div> Closed	<div></div> Closed	<div></div> In Progress	<div></div> Not Started	<div></div> Not Started
GA-02 > Apartments > GA Core > 1st Floor > Internals > Apartments Project	<div></div> Closed	<div></div> Closed	<div></div> Closed	<div></div> In Progress	<div></div> Not Started
GA-03 > Apartments > GA Core > 1st Floor > Internals > Apartments Project	<div></div> Closed	<div></div> Closed	<div></div> Closed	<div></div> Closed	<div></div> In Progress
GA-04 > Apartments > GA Core > 1st Floor > Internals > Apartments Project	<div></div> Closed	<div></div> In Progress	<div></div> In Progress	<div></div> Not Applicable	<div></div> In Progress
GA-05 > Apartments > GA Core > 1st Floor > Internals > Apartments Project	<div></div> Closed	<div></div> In Progress	<div></div> In Progress	<div></div> Not Applicable	<div></div> Not Started
GA-06 > Apartments > GA Core > 1st Floor > Internals > Apartments Project	<div></div> In Progress	<div></div> In Progress	<div></div> In Progress	<div></div> Not Applicable	<div></div> Not Started
GA-07 > Apartments > GA Core > 1st Floor > Internals > Apartments Project	<div></div> Not Started	<div></div> Not Started	<div></div> Not Started	<div></div> Not Started	<div></div> Not Started
GB-01 > Apartments > GB Core > 1st Floor > Internals > Apartments Project	<div></div> Closed	<div></div> Closed	<div></div> In Progress	<div></div> In Progress	<div></div> Not Started
GB-02 > Apartments > GB Core > 1st Floor > Internals > Apartments Project	<div></div> Not Started	<div></div> Not Started	<div></div> Not Started	<div></div> Not Started	<div></div> Not Started
GB-03 > Apartments > GB Core > 1st Floor > Internals > Apartments Project	<div></div> In Progress	<div></div> Not Started	<div></div> Not Started	<div></div> Not Started	<div></div> Not Started
GB-04 > Apartments > GB Core > 1st Floor > Internals > Apartments Project	<div></div> In Progress	<div></div> Not Started	<div></div> Not Started	<div></div> Not Started	<div></div> Not Started
GB-05 > Apartments > GB Core > 1st Floor > Internals > Apartments Project	<div></div> Closed	<div></div> Closed	<div></div> Closed	<div></div> In Progress	<div></div> In Progress
A-02-01 > Apartments > Core A > 2nd Floor > Internals > Apartments Project	<div></div> Not Started	<div></div> Not Started	<div></div> Not Started	<div></div> Not Started	<div></div> Not Started
A-02-02 > Apartments > Core A > 2nd Floor > Internals > Apartments Project	<div></div> Not Started	<div></div> Not Started	<div></div> Not Started	<div></div> Not Started	<div></div> Not Started
B-02-01 > Apartments > Core B > 2nd Floor > Internals > Apartments Project	<div></div> Not Started	<div></div> Not Started	<div></div> Not Started	<div></div> Not Started	<div></div> Not Started

