



# **SAGE 300CLOUD**

# **EXTENDED PROFILE**



## OVERVIEW

Sage 300cloud (formerly Sage Accpac) is an enterprise resource planning (ERP) software system that serves small and medium-sized businesses in professional services, financial services, the public sector, and other markets such as distribution and wholesale.

Sage 300cloud takes the complexity out of managing your business finances across borders, in multiple currencies and locations.

Some core features of Sage 300cloud are:

- Manage multiple companies and currencies – Sage 300cloud makes it easy to set up and manage multiple companies, close books, and report results by company or consolidated company.
- Eliminate international business complexity – With Sage 300cloud, you can maintain an unlimited number of currencies and exchange rates, get daily updates, and automate the gains or losses from fluctuations.
- Simplify inventory management – Ship orders on time, from multiple locations. Simplify your inventory—including shipments, returns, and adjustments—with multi-location inventory tracking.
- Automate your finances – Simplify your monthly bank reconciliations. Detect unrecorded transactions, errors, and differences, and easily correct to reconcile your books with your bank statements.



## SOFTWARE SPECIFICATION

OVERVIEW	
PRODUCT NAME	Sage 300cloud
BUSINESS SECTORS	
DISTRIBUTION	✓
GOVERNMENT & NPO	✓
MANUFACTURING	✓
RETAIL	✓
SERVICES	✓
INDUSTRY	
AEROSPACE & DEFENSE	✓
AUTOMOTIVE	✓
CHEMICAL	✓
CONSTRUCTION	✓
COSMETICS	✓

ELECTRONICS	✓
ENERGY/POWER/UTILITIES	✓
ENGINEERING	✓
FASHION	✓
FINANCIAL SERVICES	✓
FOOD & BEVERAGE	✓
LOCAL GOVERNMENT	✓
MEDIA	✓
MEDICAL & HEALTHCARE	✓
METALWORKING	✓
OILFIELD	✓
PACKAGING	✓
PAINT & ADHESIVES	✓
PHARMACEUTICAL	✓
PLASTICS & RUBBER	✓
PRINT & DESIGN	✓
RENTAL	✓
TELECOMMUNICATIONS	✓
WOODWORKING	✓
CANNABIS	✗

EDUCATION	✗
NONPROFIT	✗
ERP SOFTWARE FEATURES	
BILLING	✓
BUSINESS INTELLIGENCE/ANALYTICS	✓
COSTING	✓
CRM	✓
CUSTOMER SERVICE	✓
PRODUCT DESIGN	✗
FINANCIALS & ACCOUNTING	✓
HR	✗
INVENTORY MANAGEMENT	✓
ORDER MANAGEMENT	✓
PLANNING & SCHEDULING	✓
PROJECT MANAGEMENT	✓
PURCHASING	✓
QUALITY CONTROL	✗
SALES	✓
SHIPPING & DISTRIBUTION	✓
SUPPLY CHAIN MANAGEMENT	✓

WAREHOUSE MANAGEMENT	✓
ASSET MANAGEMENT	✗
DOCUMENT MANAGEMENT	✓
CUSTOMER SUITABILITY	
ENTERPRISE (1000+ EMPLOYEES)	✓
MEDIUM SIZE (251-1000 EMPLOYEES)	✓
SMALL BUSINESS (1-250 EMPLOYEES)	✗
ADDITIONAL PRODUCT INFO	
MULTI LANGUAGE	✓
MULTI CURRENCY	✓
CUSTOMIZABLE	✓
SYSTEM HOSTING	
CLOUD	✓
INSTALLED ON PREMISE	✗
FURTHER INFORMATION	



## SOFTWARE SCREENSHOTS

Company: INC019 (Sample Company Inc.)  
Date: Jan 2020  
Ledger type: Default

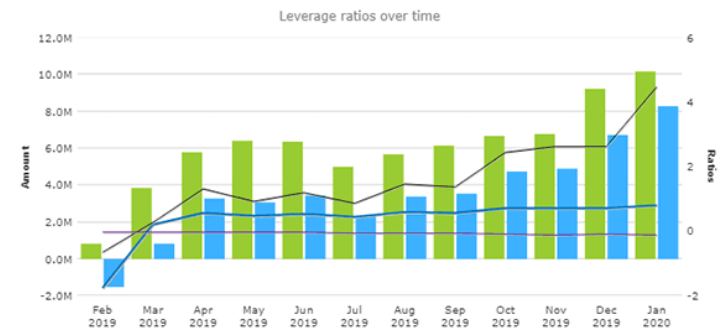
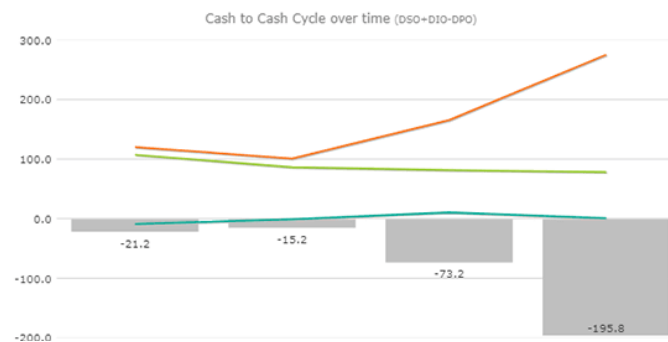
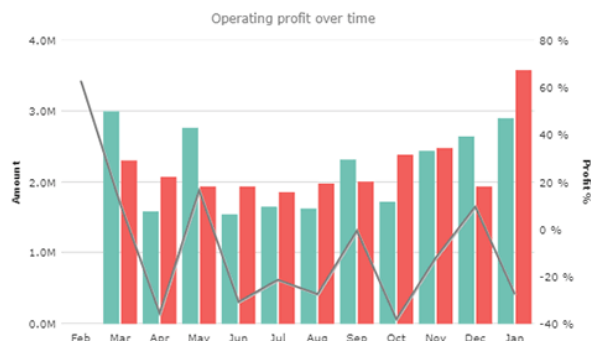
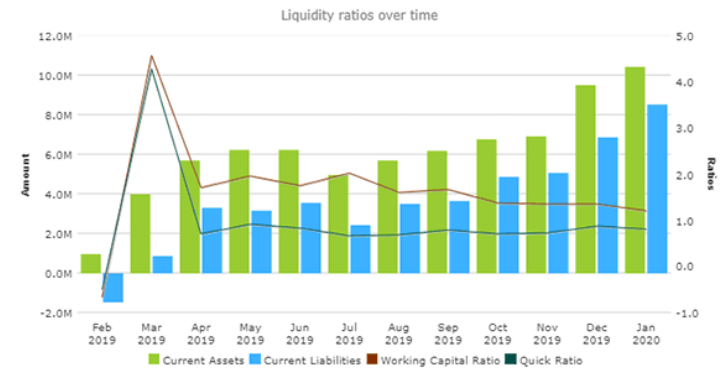
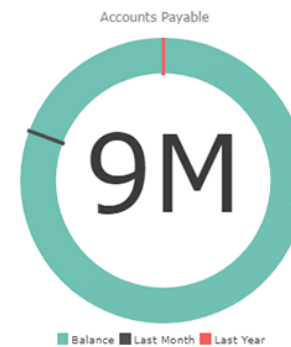
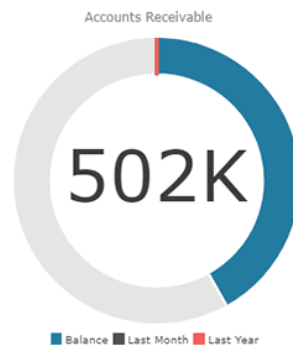
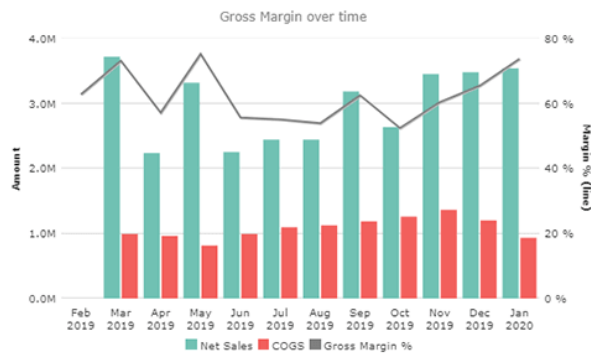
**PERFORMANCE**  
Net Sales: 3,546K  
Gross Margin: 2,615K (73.74 %)  
Operating Profit: -968K (-27.31 %)

**ACTIVITY**  
AR: 501,998  
AP: 8,563,883  
Cash to Cash Cycle: -168.1 days

**PROFITABILITY**  
Return on Assets: -9.53 %  
Return on Equity: -37.14 %

**LIQUIDITY**  
Working Capital: 1,941K  
Working Capital Ratio: 1.23  
Quick Ratio: 0.83

**LEVERAGE**  
Debt Ratio: 0.8  
Debt to Equity Ratio: 4.47  
Long Term Debt to equity: -0.12



2019 2019 2019 2019 2019 2019 2019 2019 2019 2019 2019 2020

Income Expenses Operating Profit %

Q2 2019

Q3 2019

Q4 2019

Q1 2020

Assets

Liabilities

Debt Ratio

Debt to Equity Ratio

DSO DPO DIO Cash to Cash

Long Term Debt to Equi...

