



# **MICROSOFT DYNAMICS AX**

## **EXTENDED PROFILE**



## OVERVIEW

Microsoft Dynamics AX (formerly Axapta) is a comprehensive ERP solution designed for large and medium-sized enterprises, offering industry-specific capabilities to support sectors such as manufacturing, distribution, retail, professional services and the public sector.

## IS DYNAMICS AX DISCONTINUED?

Although Microsoft **ended mainstream support** for Dynamics AX in April 2022, it is still possible to use the software or upgrade to the latest version of Dynamics 365.

## WHAT IS DYNAMICS AX USED FOR?

Microsoft Dynamics AX is a versatile tool for managing finance, operations, and supply chain processes. It delivers industry-specific solutions for sectors such as manufacturing, retail, and public sector organizations. AX ERP is designed to be flexible and scalable, catering to enterprise-level requirements. Its robust functionality makes it ideal for companies looking to centralize business processes in a customizable system.

This solution, designed for multinational companies, supports global operations with features like multi-currency and multi-language capabilities. Microsoft Dynamics AX allows businesses to use off-the-shelf products for quick deployment and low-risk ROI, along with customized modules for specific needs.

## WHAT IS DYNAMICS AX CALLED NOW?

In recent years, Microsoft has evolved Dynamics AX into [Dynamics 365 for Finance and Operations](#), a cloud-based solution that integrates with the broader Dynamics 365 ecosystem. This evolution represents a shift toward more integrated, intelligent ERP systems incorporating AI and machine learning capabilities.

The SaaS version of Dynamics AX, now part of Dynamics 365, offers more flexibility, better scalability and

## FEATURE OVERVIEW

cost efficiency, making it a popular choice for businesses of all sizes, especially those looking for lower-cost ERP solutions with enterprise-grade functionality.

## WHAT IS THE DIFFERENCE BETWEEN DYNAMICS AX AND DYNAMICS 365?

The primary difference between Dynamics AX and Dynamics 365 lies in the system architecture and capabilities. Dynamics AX was traditionally an on-premise solution, with some later versions offering hybrid options, whereas Dynamics 365 is a fully cloud-based platform that integrates advanced technologies like AI, machine learning, and IoT.

While both solutions offer ERP functionality, Dynamics 365 provides more flexibility, real-time analytics, and easier integration with other Microsoft products, making it an ideal upgrade path for businesses currently using AX software.

## LEGACY AX SOFTWARE VS. DYNAMICS 365: WHICH ONE TO CHOOSE?

For companies currently using Microsoft Dynamics AX, deciding whether to stick with the legacy software or upgrade to Dynamics 365 depends on their operational needs and growth goals.

While AX software offers robust ERP capabilities, its **lack of mainstream support** and **absence of modern features** like AI-driven insights may limit its long-term viability. Dynamics 365, on the other hand, provides a future-ready solution with greater scalability, flexibility, and integrated functionalities.



SOFTWARE SPECIFICATION

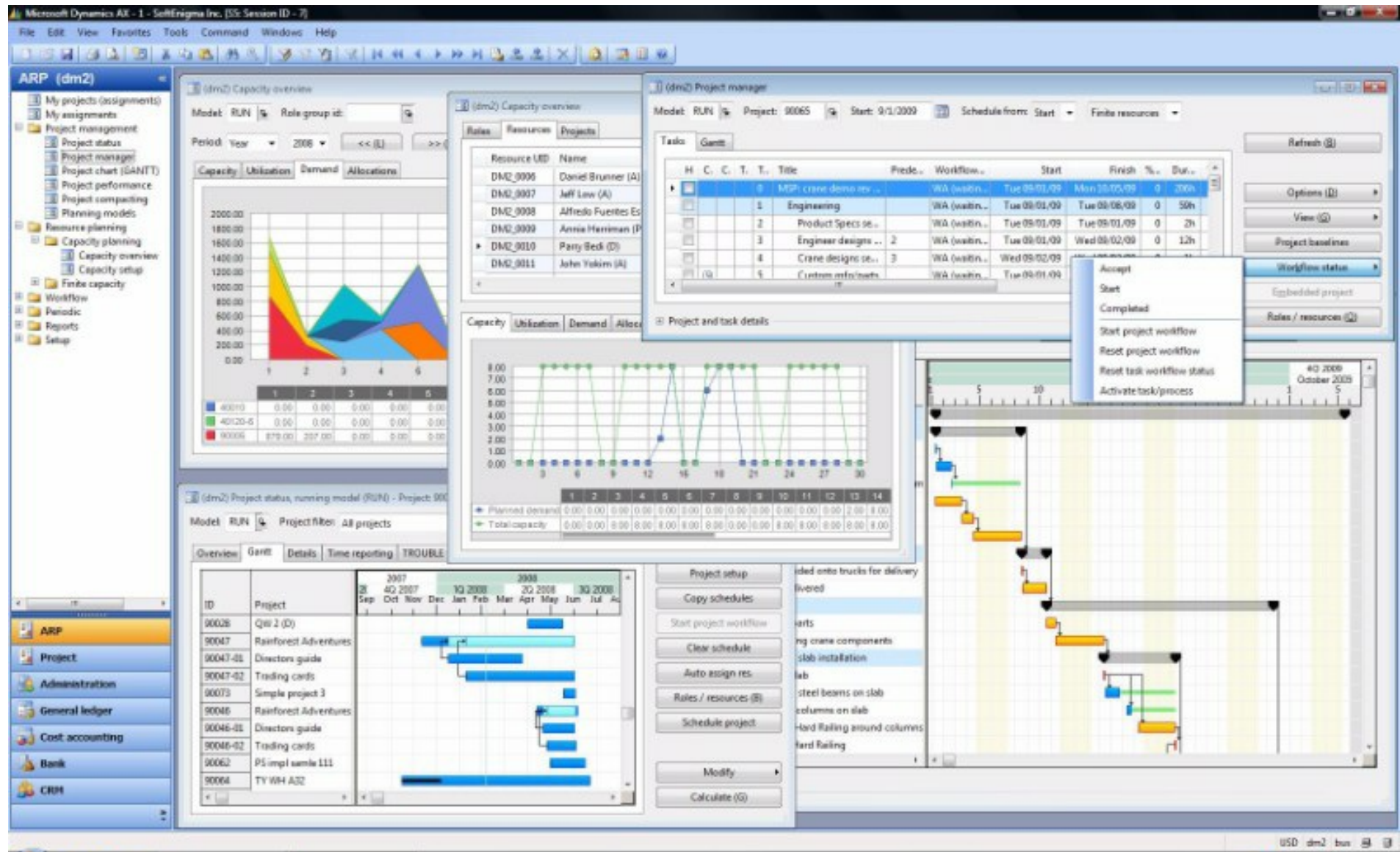
|                        |                       |
|------------------------|-----------------------|
| OVERVIEW               |                       |
| PRODUCT NAME           | Microsoft Dynamics AX |
| BUSINESS SECTORS       |                       |
| DISTRIBUTION           | ✓                     |
| GOVERNMENT & NPO       | ✓                     |
| MANUFACTURING          | ✓                     |
| RETAIL                 | ✓                     |
| SERVICES               | ✓                     |
| INDUSTRY               |                       |
| AEROSPACE & DEFENSE    | ✓                     |
| AUTOMOTIVE             | ✓                     |
| CHEMICAL               | ✓                     |
| CONSTRUCTION           | ✓                     |
| COSMETICS              | ✓                     |
| ELECTRONICS            | ✓                     |
| ENERGY/POWER/UTILITIES | ✓                     |

|                      |   |
|----------------------|---|
| ENGINEERING          | ✓ |
| FASHION              | ✓ |
| FINANCIAL SERVICES   | ✓ |
| FOOD & BEVERAGE      | ✓ |
| LOCAL GOVERNMENT     | ✓ |
| MEDIA                | ✓ |
| MEDICAL & HEALTHCARE | ✓ |
| METALWORKING         | ✓ |
| OILFIELD             | ✓ |
| PACKAGING            | ✓ |
| PAINT & ADHESIVES    | ✓ |
| PHARMACEUTICAL       | ✓ |
| PLASTICS & RUBBER    | ✓ |
| PRINT & DESIGN       | ✓ |
| RENTAL               | ✓ |
| TELECOMMUNICATIONS   | ✓ |
| WOODWORKING          | ✓ |
| CANNABIS             | ✗ |
| EDUCATION            | ✗ |
| NONPROFIT            | ✗ |
|                      |   |

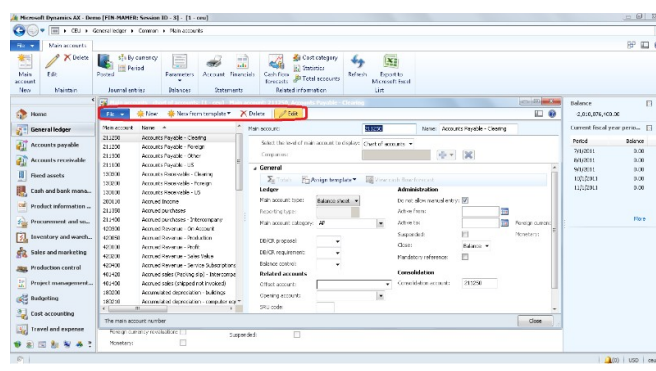
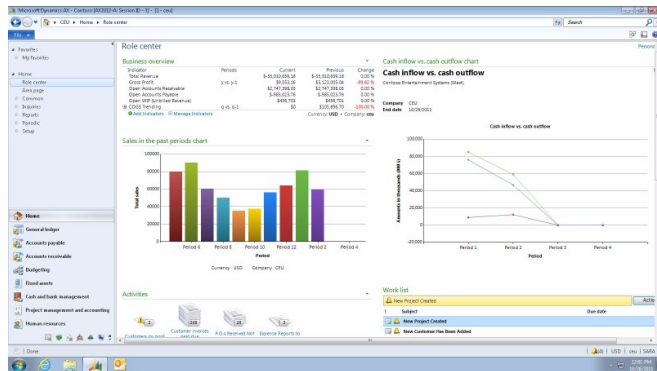
| ERP SOFTWARE FEATURES           |   |
|---------------------------------|---|
| BILLING                         | ✓ |
| BUSINESS INTELLIGENCE/ANALYTICS | ✓ |
| COSTING                         | ✓ |
| CRM                             | ✓ |
| CUSTOMER SERVICE                | ✓ |
| PRODUCT DESIGN                  | ✓ |
| FINANCIALS & ACCOUNTING         | ✓ |
| HR                              | ✓ |
| INVENTORY MANAGEMENT            | ✓ |
| ORDER MANAGEMENT                | ✓ |
| PLANNING & SCHEDULING           | ✓ |
| PROJECT MANAGEMENT              | ✓ |
| PURCHASING                      | ✓ |
| QUALITY CONTROL                 | ✓ |
| SALES                           | ✓ |
| SHIPPING & DISTRIBUTION         | ✓ |
| SUPPLY CHAIN MANAGEMENT         | ✓ |
| WAREHOUSE MANAGEMENT            | ✓ |
| ASSET MANAGEMENT                | ✓ |
|                                 |   |

|                                  |   |
|----------------------------------|---|
| DOCUMENT MANAGEMENT              | ✓ |
| CUSTOMER SUITABILITY             |   |
| ENTERPRISE (1000+ EMPLOYEES)     | ✓ |
| MEDIUM SIZE (251-1000 EMPLOYEES) | ✓ |
| SMALL BUSINESS (1-250 EMPLOYEES) | ✓ |
| ADDITIONAL PRODUCT INFO          |   |
| MULTI LANGUAGE                   | ✓ |
| MULTI CURRENCY                   | ✓ |
| CUSTOMIZABLE                     | ✓ |
| SYSTEM HOSTING                   |   |
| CLOUD                            | ✗ |
| INSTALLED ON PREMISE             | ✓ |
| FURTHER INFORMATION              |   |

## SOFTWARE SCREENSHOTS







## Project Manager Role Center in AX

