



EPICOR KINETIC

EXTENDED PROFILE



OVERVIEW

Capture the true value of cloud ERP with Epicor Kinetic (formerly Epicor ERP), a solution made with manufacturers, for manufacturers. An intuitive, configurable, and guided user experience with embedded learning helps you maximize your profitability with real-time business intelligence and built-in collaboration tools.

Kinetic has the functionality you need to run a modern, future-ready business poised to capitalize on data, transform digitally, and innovate without limits. All the features you need to scale, compete, and attract top talent to your organization.

MANUFACTURING SOFTWARE BACKED BY EPICOR'S DECADES OF INDUSTRY EXPERTISE

Trust the manufacturing expertise of Epicor to gain the momentum and know-how you need to accelerate growth and innovation. Epicor Kinetic is distinguished by its increasingly broad focus on planning and managing all resources, both within and across locations and company boundaries. Power your business with a secure, tightly integrated ERP and embedded capabilities.

This expanded scope is most strongly felt in the areas of Customer Relationship Management (CRM), Supply Chain Management (SCM), Advanced Planning and Scheduling (APS), Product Lifecycle Management (PLM), Advanced Manufacturing Execution System (MES), Quality Management System (QMS), Field Service Management (FSM), and Business Process Management (BPM) to name only a few. Manufacturers of all sizes have recognized the value of an integrated suite rather than trying to piece disparate solutions together.

FREQUENTLY ASKED QUESTIONS

WHAT IS THE DIFFERENCE BETWEEN EPICOR ERP AND EPICOR KINETIC?

Epicor Kinetic is the rebranded and updated version of Epicor ERP, launched to modernize the platform

with a more user-friendly, cloud-focused approach. While both Epicor ERP and Epicor Kinetic serve as enterprise resource planning (ERP) solutions designed to support manufacturing and distribution industries, there are some key differences:

- **User Experience and Interface:**

Epicor Kinetic introduces a redesigned, more intuitive user interface (UI) compared to the earlier Epicor ERP versions. The Kinetic UI emphasizes ease of use, with guided navigation, customizable dashboards, and a modernized, responsive design that enhances productivity and reduces learning curves.

- **Cloud-first architecture:** While Epicor ERP offered cloud deployment options, Epicor Kinetic is built with a cloud-first approach to streamline operations for companies that utilize cloud benefits like remote access, automatic updates, and scalability. Kinetic's architecture is optimized for cloud use, although it still supports on-premise and hybrid deployment models for flexibility.
- **Enhanced embedded learning tools:** Epicor Kinetic includes more extensive, embedded learning and training tools designed to support user onboarding and continuous learning directly within the application. These help users quickly adapt to the software and make the most of its features.
- **Advanced capabilities for digital transformation:** Kinetic offers new and updated modules to support digital transformation in manufacturing, such as Advanced Planning and Scheduling (APS), enhanced Customer Relationship Management (CRM), and improved analytics and reporting capabilities. These features cater to modern business needs by providing real-time data and enhanced automation options.
- **Future-proof development:** Epicor Kinetic is a future-ready ERP platform designed to embrace trends like IoT, AI, and machine learning. It offers advanced tech integration compared to older Epicor ERP versions.



SOFTWARE SPECIFICATION

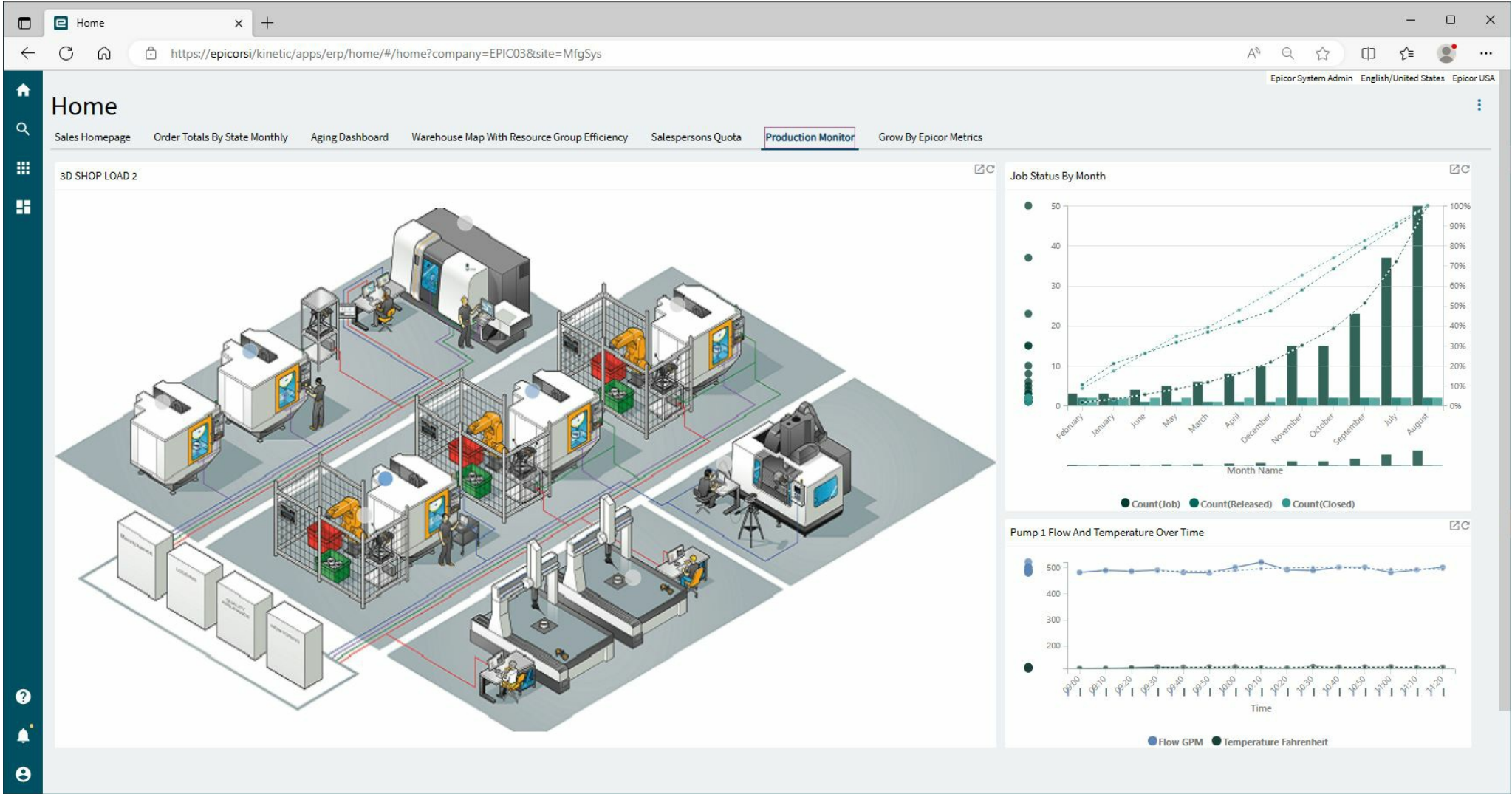
OVERVIEW	
PRODUCT NAME	Epicor Kinetic
BUSINESS SECTORS	
DISTRIBUTION	✗
GOVERNMENT & NPO	✗
MANUFACTURING	✓
RETAIL	✗
SERVICES	✗
INDUSTRY	
AEROSPACE & DEFENSE	✓
AUTOMOTIVE	✓
CHEMICAL	✗
CONSTRUCTION	✓
COSMETICS	✗
ELECTRONICS	✓
ENERGY/POWER/UTILITIES	✗
ENGINEERING	✓

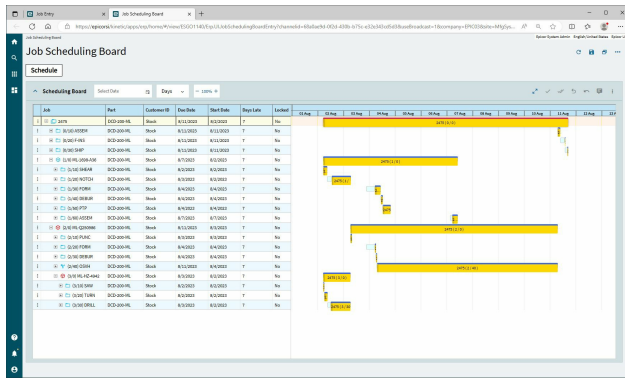
FASHION	×
FINANCIAL SERVICES	×
FOOD & BEVERAGE	×
LOCAL GOVERNMENT	×
MEDIA	×
MEDICAL & HEALTHCARE	✓
METALWORKING	✓
OILFIELD	×
PACKAGING	✓
PAINT & ADHESIVES	×
PHARMACEUTICAL	×
PLASTICS & RUBBER	✓
PRINT & DESIGN	×
RENTAL	×
TELECOMMUNICATIONS	×
WOODWORKING	✓
CANNABIS	×
EDUCATION	×
NONPROFIT	×

ERP SOFTWARE FEATURES	
BILLING	✓
BUSINESS INTELLIGENCE/ANALYTICS	✓
COSTING	✓
CRM	✓
CUSTOMER SERVICE	✓
PRODUCT DESIGN	✓
FINANCIALS & ACCOUNTING	✓
HR	✓
INVENTORY MANAGEMENT	✓
ORDER MANAGEMENT	✓
PLANNING & SCHEDULING	✓
PROJECT MANAGEMENT	✓
PURCHASING	✓
QUALITY CONTROL	✓
SALES	✓
SHIPPING & DISTRIBUTION	✓
SUPPLY CHAIN MANAGEMENT	✓
WAREHOUSE MANAGEMENT	✓
ASSET MANAGEMENT	✓
	✓

DOCUMENT MANAGEMENT	
CUSTOMER SUITABILITY	
ENTERPRISE (1000+ EMPLOYEES)	✓
MEDIUM SIZE (251-1000 EMPLOYEES)	✓
SMALL BUSINESS (1-250 EMPLOYEES)	✓
ADDITIONAL PRODUCT INFO	
MULTI LANGUAGE	✓
MULTI CURRENCY	✓
CUSTOMIZABLE	✗
SYSTEM HOSTING	
CLOUD	✓
INSTALLED ON PREMISE	✓
FURTHER INFORMATION	
PRICING	Monthly Subscription starting at \$175 / user
IMPLEMENTATION TIMEFRAME	24 weeks

SOFTWARE SCREENSHOTS



[illegible]

Epicor Learning Center

Classic Epicor Education Courses
Search

Live Training
Search

My Agendas
Open

My Certifications
Open

My Registrations
Open

My Assignments

2022 Sales Enablement Survey
Due Date 11/30/2022

★ Featured Content
Understanding the System Flow

SALES

PRODUCTION

MATERIAL

FINANCE

Shortcuts
No Shortcuts Added.

Library
Epicor Learning Center

Digital Badge Signature Update

Text

Documentation Links
Kinetix 2023's Application Help
Epicor Modules help

© 2023 Epicor Software Corporation | Privacy Policy | Cookies Policy