



EFACS E/8

EXTENDED PROFILE



OVERVIEW

EFACS E/8, from Exel Computer Systems, is a highly flexible, AI-enabled ERP system designed to meet the diverse needs of modern businesses. Its component-based architecture ensures precise customization to fit any organization's unique requirements, empowering companies to adapt seamlessly to industry changes.

EFACS E/8 provides real-time data integration, enabling organizations to work from a single, accurate version of the "truth."

KEY FEATURES OF EFACS E/8

- **AI-enabled technology:** EFACS E/8 incorporates AI to streamline workflows, optimize operations, and provide actionable insights, ensuring businesses stay ahead of the curve.
- **Customization toolkit:** A user-friendly toolkit enables businesses to create bespoke applications and customize workflows without external developers, making it a future-proof investment.
- **Business process automation:** Automates repetitive tasks, such as sending order confirmations and initiating subsequent actions, saving time and reducing errors.
- **Comprehensive manufacturing support:** Accommodates various manufacturing methodologies, including make-to-order, engineer-to-order, configure-to-order, assemble-to-order, make-to-stock, and make-to-contract/project. Advanced modules like MRP, Master Production Scheduling, and Capacity Planning ensure timely production and resource optimization.
- **CRM integration:** EFACS E/8 captures and manages customer interactions, enabling drill-throughs to access related data across modules, ensuring smooth navigation and better customer insights.
- **Field service management:** Features like the logic-driven Assisted Engineer Scheduling Board and a robust mobile app empower field engineers to manage reactive and planned workloads efficiently.

Users of EFACS E/8 ERP will benefit from system-wide features such as document management, multi-language, and currency capabilities as well as a touchscreen interface and process automation.

The system can be hosted on cloud servers or at the user's premises, the system is browser-based and so can be accessed via any desktop. It's also optimized for Android, iOS, and other touchscreen devices.

USE CASES:

EFACS E/8 has been successfully implemented in numerous industries, showcasing its adaptability:

- **Aerospace:** Streamlining supply chain management and compliance with complex regulations.
- **Automotive:** Supporting just-in-time (JIT) production methodologies for efficiency.
- **Food Manufacturing:** Ensuring traceability and quality control at every stage.
- **Medical and Pharmaceuticals:** Handling stringent quality standards and regulatory documentation.



SOFTWARE SPECIFICATION

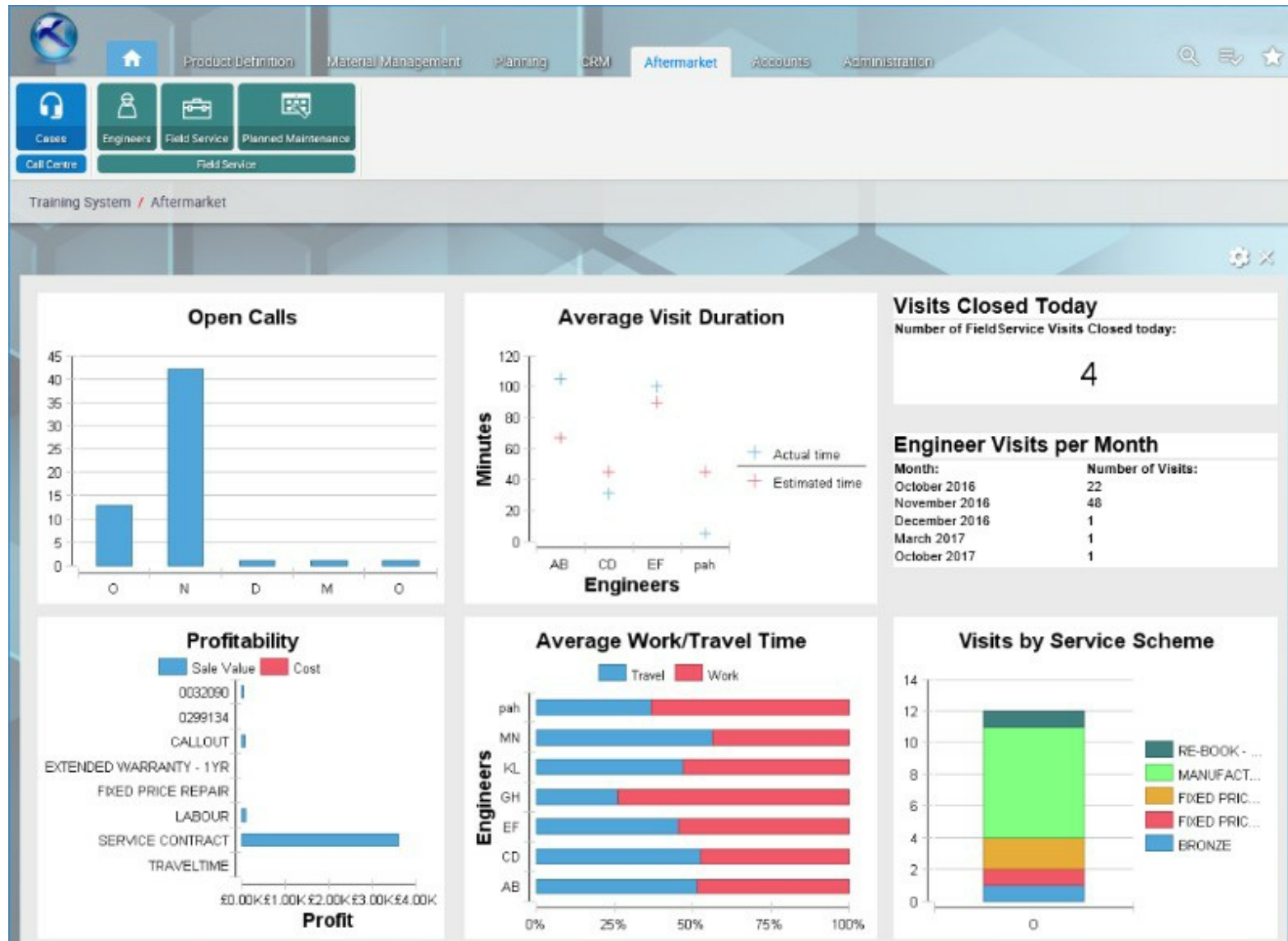
OVERVIEW	
PRODUCT NAME	EFACS E/8
BUSINESS SECTORS	
DISTRIBUTION	✓
GOVERNMENT & NPO	✗
MANUFACTURING	✓
RETAIL	✗
SERVICES	✓
INDUSTRY	
AEROSPACE & DEFENSE	✓
AUTOMOTIVE	✓
CHEMICAL	✓
CONSTRUCTION	✓
COSMETICS	✓
ELECTRONICS	✓
	✓

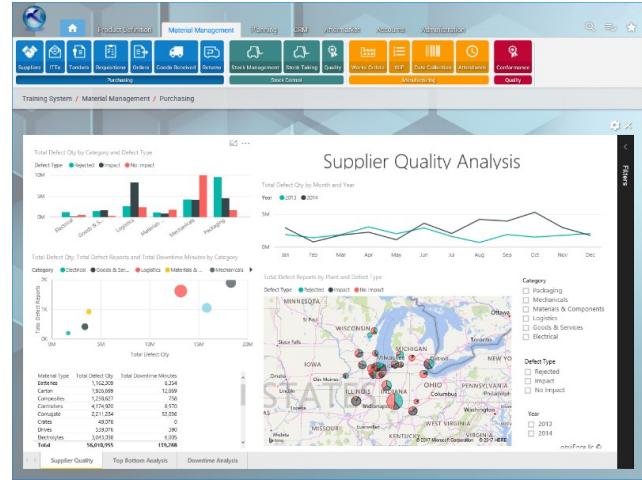
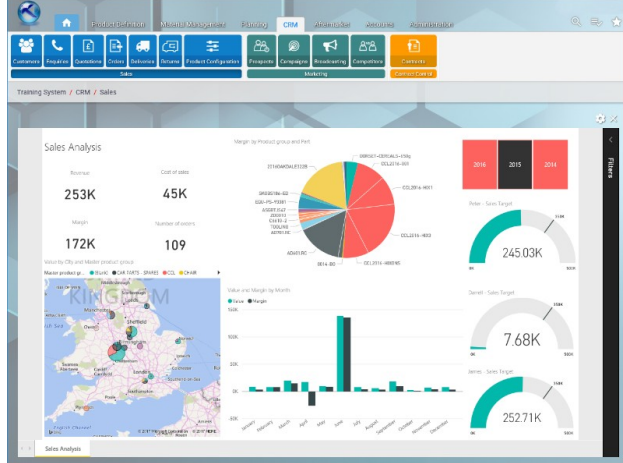
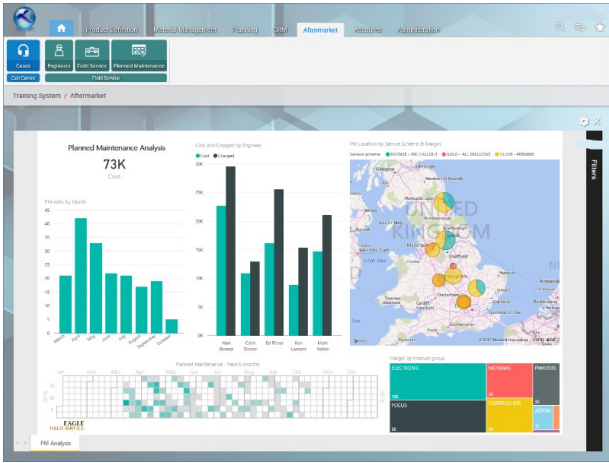
ENERGY/POWER/UTILITIES	
ENGINEERING	✓
FASHION	✗
FINANCIAL SERVICES	✗
FOOD & BEVERAGE	✓
LOCAL GOVERNMENT	✗
MEDIA	✗
MEDICAL & HEALTHCARE	✓
METALWORKING	✓
OILFIELD	✓
PACKAGING	✓
PAINT & ADHESIVES	✓
PHARMACEUTICAL	✓
PLASTICS & RUBBER	✓
PRINT & DESIGN	✓
RENTAL	✗
TELECOMMUNICATIONS	✓
WOODWORKING	✓
CANNABIS	✗
EDUCATION	✗
NONPROFIT	✗

ERP SOFTWARE FEATURES	
BILLING	✓
BUSINESS INTELLIGENCE/ANALYTICS	✓
COSTING	✓
CRM	✓
CUSTOMER SERVICE	✓
PRODUCT DESIGN	✓
FINANCIALS & ACCOUNTING	✓
HR	✗
INVENTORY MANAGEMENT	✓
ORDER MANAGEMENT	✓
PLANNING & SCHEDULING	✓
PROJECT MANAGEMENT	✓
PURCHASING	✓
QUALITY CONTROL	✓
SALES	✓
SHIPPING & DISTRIBUTION	✓
SUPPLY CHAIN MANAGEMENT	✓
WAREHOUSE MANAGEMENT	✓
ASSET MANAGEMENT	✓

DOCUMENT MANAGEMENT	✓
CUSTOMER SUITABILITY	
ENTERPRISE (1000+ EMPLOYEES)	✓
MEDIUM SIZE (251-1000 EMPLOYEES)	✓
SMALL BUSINESS (1-250 EMPLOYEES)	✓
ADDITIONAL PRODUCT INFO	
MULTI LANGUAGE	✓
MULTI CURRENCY	✓
CUSTOMIZABLE	✓
SYSTEM HOSTING	
CLOUD	✓
INSTALLED ON PREMISE	✓
FURTHER INFORMATION	
PRICING	Pricing not available
IMPLEMENTATION TIMEFRAME	3 months

SOFTWARE SCREENSHOTS





Customers

Customer	Name	Status	Live	Priority	Industrial class	Customer class	Status	Account	Next contact date
AXIOT01	AXIOMATIC TECHNOLOG	ACTIVE			5 PLASTICS	CATG0000	DM	FG	20 October 20
B001	B-HAD JARROLD	ACTIVE			5 LEAD	CATG0000	DM	DM	
CENTR01	CENTRA PLASTICS	ACTIVE			5 PLASTICS	CATG0000	DM	DM	15 October 20
CEN01	C.A ELECTRICAL INSTAL	ACTIVE			5 GENENG	CATG0000	FG	DM	19 October 20
CONTR01	CONTRACT CONTRACTORS	ACTIVE			5 CAPITAL	CATG0000	FG	FG	29 September 20
CONTR02	CONTRACTS FOR LUNA	ACTIVE			5 CAPITAL	CATG0000	FG	FG	29 September 20
CUS01	CUT METALLURGY AND	ACTIVE			5 GENENG	CATG0000	FG	FG	19 October 20
GENAP01	JANWELD FABRICATIO	ACTIVE			5 AERO	CATG0000	DM	DM	31 October 20
HOUN01	J. HOUNG BELLIS	ACTIVE			5 GENENG	CATG0000	DM	DM	12 November 20
HOUN02	J. HOUNG BELLIS	ACTIVE			5 AERO	CATG0000	DM	DM	19 November 20
NORTH01	NORTHAMPTON TOX A	ACTIVE			5 GENENG	CATG0000	DM	DM	19 November 20
POWER01	POWERPLAY SYSTEMS	ACTIVE			5 AERO	CATG0000	DM	DM	19 November 20
ROB01	ROBINSON JONES T.C.A.	ACTIVE			5 ELECT	CATG0000	DM	DM	
ROB02	ROBINSON PUMPS LTD	ACTIVE			5 GENENG	CATG0000	FG	DM	
ROB03	ROBINSON PUMPS LTD	ACTIVE			5 AERO	CATG0000	DM	DM	21 October 20
ROB04	ROBINSON PUMPS LTD	ACTIVE			5 AERO	CATG0000	DM	DM	
SEB01	STEWART ENGINEERING	ACTIVE			5 LEAD	CATG0000	FG	DM	
SEB02	STEWART ENGINEERING	ACTIVE			5 GENENG	CATG0000	DM	DM	09 October 20
SEB03	STEWART ENGINEERING	ACTIVE			5 GENENG	CATG0000	DM	DM	
SEB04	STEWART ENGINEERING	ACTIVE			5 GENENG	CATG0000	DM	DM	
SEB05	STEWART ENGINEERING	ACTIVE			5 GENENG	CATG0000	DM	DM	
SEB06	STEWART ENGINEERING	ACTIVE			5 GENENG	CATG0000	DM	DM	
SEB07	STEWART ENGINEERING	ACTIVE			5 GENENG	CATG0000	DM	DM	
SEB08	STEWART ENGINEERING	ACTIVE			5 GENENG	CATG0000	DM	DM	
SEB09	STEWART ENGINEERING	ACTIVE			5 GENENG	CATG0000	DM	DM	
SEB10	STEWART ENGINEERING	ACTIVE			5 GENENG	CATG0000	DM	DM	
SEB11	STEWART ENGINEERING	ACTIVE			5 GENENG	CATG0000	DM	DM	
SEB12	STEWART ENGINEERING	ACTIVE			5 GENENG	CATG0000	DM	DM	
SEB13	STEWART ENGINEERING	ACTIVE			5 GENENG	CATG0000	DM	DM	
SEB14	STEWART ENGINEERING	ACTIVE			5 GENENG	CATG0000	DM	DM	
SEB15	STEWART ENGINEERING	ACTIVE			5 GENENG	CATG0000	DM	DM	
SEB16	STEWART ENGINEERING	ACTIVE			5 GENENG	CATG0000	DM	DM	
SEB17	STEWART ENGINEERING	ACTIVE			5 GENENG	CATG0000	DM	DM	
SEB18	STEWART ENGINEERING	ACTIVE			5 GENENG	CATG0000	DM	DM	
SEB19	STEWART ENGINEERING	ACTIVE			5 GENENG	CATG0000	DM	DM	
SEB20	STEWART ENGINEERING	ACTIVE			5 GENENG	CATG0000	DM	DM	
SEB21	STEWART ENGINEERING	ACTIVE			5 GENENG	CATG0000	DM	DM	
SEB22	STEWART ENGINEERING	ACTIVE			5 GENENG	CATG0000	DM	DM	
SEB23	STEWART ENGINEERING	ACTIVE			5 GENENG	CATG0000	DM	DM	
SEB24	STEWART ENGINEERING	ACTIVE			5 GENENG	CATG0000	DM	DM	
SEB25	STEWART ENGINEERING	ACTIVE			5 GENENG	CATG0000	DM	DM	
SEB26	STEWART ENGINEERING	ACTIVE			5 GENENG	CATG0000	DM	DM	
SEB27	STEWART ENGINEERING	ACTIVE			5 GENENG	CATG0000	DM	DM	
SEB28	STEWART ENGINEERING	ACTIVE			5 GENENG	CATG0000	DM	DM	
SEB29	STEWART ENGINEERING	ACTIVE			5 GENENG	CATG0000	DM	DM	
SEB30	STEWART ENGINEERING	ACTIVE			5 GENENG	CATG0000	DM	DM	
SEB31	STEWART ENGINEERING	ACTIVE			5 GENENG	CATG0000	DM	DM	
SEB32	STEWART ENGINEERING	ACTIVE			5 GENENG	CATG0000	DM	DM	
SEB33	STEWART ENGINEERING	ACTIVE			5 GENENG	CATG0000	DM	DM	
SEB34	STEWART ENGINEERING	ACTIVE			5 GENENG	CATG0000	DM	DM	
SEB35	STEWART ENGINEERING	ACTIVE			5 GENENG	CATG0000	DM	DM	
SEB36	STEWART ENGINEERING	ACTIVE			5 GENENG	CATG0000	DM	DM	
SEB37	STEWART ENGINEERING	ACTIVE			5 GENENG	CATG0000	DM	DM	
SEB38	STEWART ENGINEERING	ACTIVE			5 GENENG	CATG0000	DM	DM	
SEB39	STEWART ENGINEERING	ACTIVE			5 GENENG	CATG0000	DM	DM	
SEB40	STEWART ENGINEERING	ACTIVE			5 GENENG	CATG0000	DM	DM	
SEB41	STEWART ENGINEERING	ACTIVE			5 GENENG	CATG0000	DM	DM	
SEB42	STEWART ENGINEERING	ACTIVE			5 GENENG	CATG0000	DM	DM	
SEB43	STEWART ENGINEERING	ACTIVE			5 GENENG	CATG0000	DM	DM	
SEB44	STEWART ENGINEERING	ACTIVE			5 GENENG	CATG0000	DM	DM	
SEB45	STEWART ENGINEERING	ACTIVE			5 GENENG	CATG0000	DM	DM	
SEB46	STEWART ENGINEERING	ACTIVE			5 GENENG	CATG0000	DM	DM	
SEB47	STEWART ENGINEERING	ACTIVE			5 GENENG	CATG0000	DM	DM	
SEB48	STEWART ENGINEERING	ACTIVE			5 GENENG	CATG0000	DM	DM	
SEB49	STEWART ENGINEERING	ACTIVE			5 GENENG	CATG0000	DM	DM	
SEB50	STEWART ENGINEERING	ACTIVE			5 GENENG	CATG0000	DM	DM	
SEB51	STEWART ENGINEERING	ACTIVE			5 GENENG	CATG0000	DM	DM	
SEB52	STEWART ENGINEERING	ACTIVE			5 GENENG	CATG0000	DM	DM	
SEB53	STEWART ENGINEERING	ACTIVE			5 GENENG	CATG0000	DM	DM	
SEB54	STEWART ENGINEERING	ACTIVE			5 GENENG	CATG0000	DM	DM	
SEB55	STEWART ENGINEERING	ACTIVE			5 GENENG	CATG0000	DM	DM	
SEB56	STEWART ENGINEERING	ACTIVE			5 GENENG	CATG0000	DM	DM	
SEB57	STEWART ENGINEERING	ACTIVE			5 GENENG	CATG0000	DM	DM	
SEB58	STEWART ENGINEERING	ACTIVE			5 GENENG	CATG0000	DM	DM	
SEB59	STEWART ENGINEERING	ACTIVE			5 GENENG	CATG0000	DM	DM	
SEB60	STEWART ENGINEERING	ACTIVE			5 GENENG	CATG0000	DM	DM	
SEB61	STEWART ENGINEERING	ACTIVE			5 GENENG	CATG0000	DM	DM	
SEB62	STEWART ENGINEERING	ACTIVE			5 GENENG	CATG0000	DM	DM	
SEB63	STEWART ENGINEERING	ACTIVE			5 GENENG	CATG0000	DM	DM	
SEB64	STEWART ENGINEERING	ACTIVE			5 GENENG	CATG0000	DM	DM	
SEB65	STEWART ENGINEERING	ACTIVE			5 GENENG	CATG0000	DM	DM	
SEB66	STEWART ENGINEERING	ACTIVE			5 GENENG	CATG0000	DM	DM	
SEB67	STEWART ENGINEERING	ACTIVE			5 GENENG	CATG0000	DM	DM	
SEB68	STEWART ENGINEERING	ACTIVE			5 GENENG	CATG0000	DM	DM	
SEB69	STEWART ENGINEERING	ACTIVE			5 GENENG	CATG0000	DM	DM	
SEB70	STEWART ENGINEERING	ACTIVE			5 GENENG	CATG0000	DM	DM	
SEB71	STEWART ENGINEERING	ACTIVE			5 GENENG	CATG0000	DM	DM	
SEB72	STEWART ENGINEERING	ACTIVE			5 GENENG	CATG0000	DM	DM	
SEB73	STEWART ENGINEERING	ACTIVE			5 GENENG	CATG0000	DM	DM	
SEB74	STEWART ENGINEERING	ACTIVE			5 GENENG	CATG0000	DM	DM	
SEB75	STEWART ENGINEERING	ACTIVE			5 GENENG	CATG0000	DM	DM	
SEB76	STEWART ENGINEERING	ACTIVE			5 GENENG	CATG0000	DM	DM	
SEB77	STEWART ENGINEERING	ACTIVE			5 GENENG	CATG0000	DM	DM	
SEB78	STEWART ENGINEERING	ACTIVE			5 GENENG	CATG0000	DM	DM	
SEB79	STEWART ENGINEERING	ACTIVE			5 GENENG	CATG0000	DM	DM	
SEB80	STEWART ENGINEERING	ACTIVE			5 GENENG	CATG0000	DM	DM	
SEB81	STEWART ENGINEERING	ACTIVE			5 GENENG	CATG0000	DM	DM	
SEB82	STEWART ENGINEERING	ACTIVE			5 GENENG	CATG0000	DM	DM	
SEB83	STEWART ENGINEERING	ACTIVE			5 GENENG	CATG0000	DM	DM	
SEB84	STEWART ENGINEERING	ACTIVE			5 GENENG	CATG0000	DM	DM	
SEB85	STEWART ENGINEERING	ACTIVE			5 GENENG	CATG0000	DM	DM	
SEB86	STEWART ENGINEERING	ACTIVE			5 GENENG	CATG0000	DM	DM	
SEB87	STEWART ENGINEERING	ACTIVE			5 GENENG	CATG0000	DM	DM	
SEB88	STEWART ENGINEERING	ACTIVE			5 GENENG	CATG0000	DM	DM	
SEB89	STEWART ENGINEERING	ACTIVE			5 GENENG	CATG0000	DM	DM	
SEB90	STEWART ENGINEERING	ACTIVE			5 GENENG	CATG0000	DM	DM	
SEB91	STEWART ENGINEERING	ACTIVE			5 GENENG	CATG0000	DM	DM	
SEB92	STEWART ENGINEERING	ACTIVE			5 GENENG	CATG0000	DM	DM	
SEB93	STEWART ENGINEERING	ACTIVE			5 GENENG	CATG0000	DM	DM	
SEB94	STEWART ENGINEERING	ACTIVE			5 GENENG	CATG0000	DM	DM	
SEB95	STEWART ENGINEERING	ACTIVE			5 GENENG	CATG0000	DM	DM	
SEB96	STEWART ENGINEERING	ACTIVE			5 GENENG	CATG0000	DM	DM	
SEB97	STEWART ENGINEERING	ACTIVE			5 GENENG	CATG0000	DM	DM	
SEB98	STEWART ENGINEERING	ACTIVE			5 GENENG	CATG0000	DM	DM	
SEB99	STEWART ENGINEERING	ACTIVE			5 GENENG	CATG0000	DM	DM	
SEB100	STEWART ENGINEERING	ACTIVE			5 GENENG	CATG0000	DM	DM	

Parts

Part number: AD501.RC Description: 125 RICH CLUTCH PLATE ASSEMBLY

Actual costs	Current costs	Going to costs	Standard costs
Seller £ 0.0000 GBP	£ 0.4812 GBP	£ 0.5052 GBP	£ 0.4878 GBP
Operator £ 0.0000 GBP	£ 14.5611 GBP	£ 33.7760 GBP	£ 28.9188 GBP
Material £ 0.0000 GBP	£ 32.5200 GBP	£ 16.7200 GBP	£ 16.7200 GBP
Subcontract £ 0.0000 GBP	£ 0.0000 GBP	£ 0.0000 GBP	£ 0.0000 GBP
Plant overhead £ 0.0000 GBP	£ 4.3917 GBP	£ 11.0912 GBP	£ 10.9122 GBP
Variable overhead £ 0.0000 GBP	£ 3.4965 GBP	£ 11.7290 GBP	£ 10.3978 GBP
Landed cost £ 0.0000 GBP	£ 0.0000 GBP	£ 0.0000 GBP	£ 0.0000 GBP
Unit £ 0.0000 GBP	£ 0.0000 GBP	£ 0.0000 GBP	£ 0.0000 GBP

Actual costs	Current costs	Going to costs	Standard costs
Seller £ 0.0000 GBP	£ 0.4812 GBP	£ 0.5052 GBP	£ 0.4878 GBP
Operator £ 0.0000 GBP	£ 14.5611 GBP	£ 33.7760 GBP	£ 28.9188 GBP
Material £ 0.0000 GBP	£ 32.5200 GBP	£ 16.7200 GBP	£ 16.7200 GBP
Subcontract £ 0.0000 GBP	£ 0.0000 GBP	£ 0.0000 GBP	£ 0.0000 GBP
Plant overhead £ 0.0000 GBP	£ 4.3917 GBP	£ 11.0912 GBP	£ 10.9122 GBP
Variable overhead £ 0.0000 GBP	£ 3.4965 GBP	£ 11.7290 GBP	£ 10.3978 GBP
Landed cost £ 0.0000 GBP	£ 0.0000 GBP	£ 0.0000 GBP	£ 0.0000 GBP
Unit £ 0.0000 GBP	£ 0.0000 GBP	£ 0.0000 GBP	£ 0.0000 GBP

